

Proposed Residential Flat Building Development

2-4 Vimy Street, Bankstown NSW 2200

DEVELOPMENT APPLICATION

LANDSCAPE WORKS

Drawing Schedule

SHEET	REV	DATE	DRAWING TITLE
LA00	A	23.04.2025	COVER SHEET
LA i	A	23.04.2025	PROPOSED LANDSCAPE CHARACTER
LA ii	A	23.04.2025	PROPOSED PLANTING PALETTE
LA iii	A	23.04.2025	PROPOSED PLANTING PALETTE
LA iv	A	23.04.2025	MATERIALS, FURNISHINGS & FIXTURES PALETTE
LA01	A	23.04.2025	GROUND FLOOR - LANDSCAPE PLAN
LA02	A	23.04.2025	LEVEL 4 - LANDSCAPE PLAN
LA03	A	23.04.2025	ROOFTOP TERRACE - LANDSCAPE PLAN
LA04	A	23.04.2025	PLANTING SCHEDULE
LA05	A	23.04.2025	TYPICAL LANDSCAPE DETAILS
LA06	A	23.04.2025	LANDSCAPE SPECIFICATION & MAINTENANCE NOTES

GENERAL NOTES

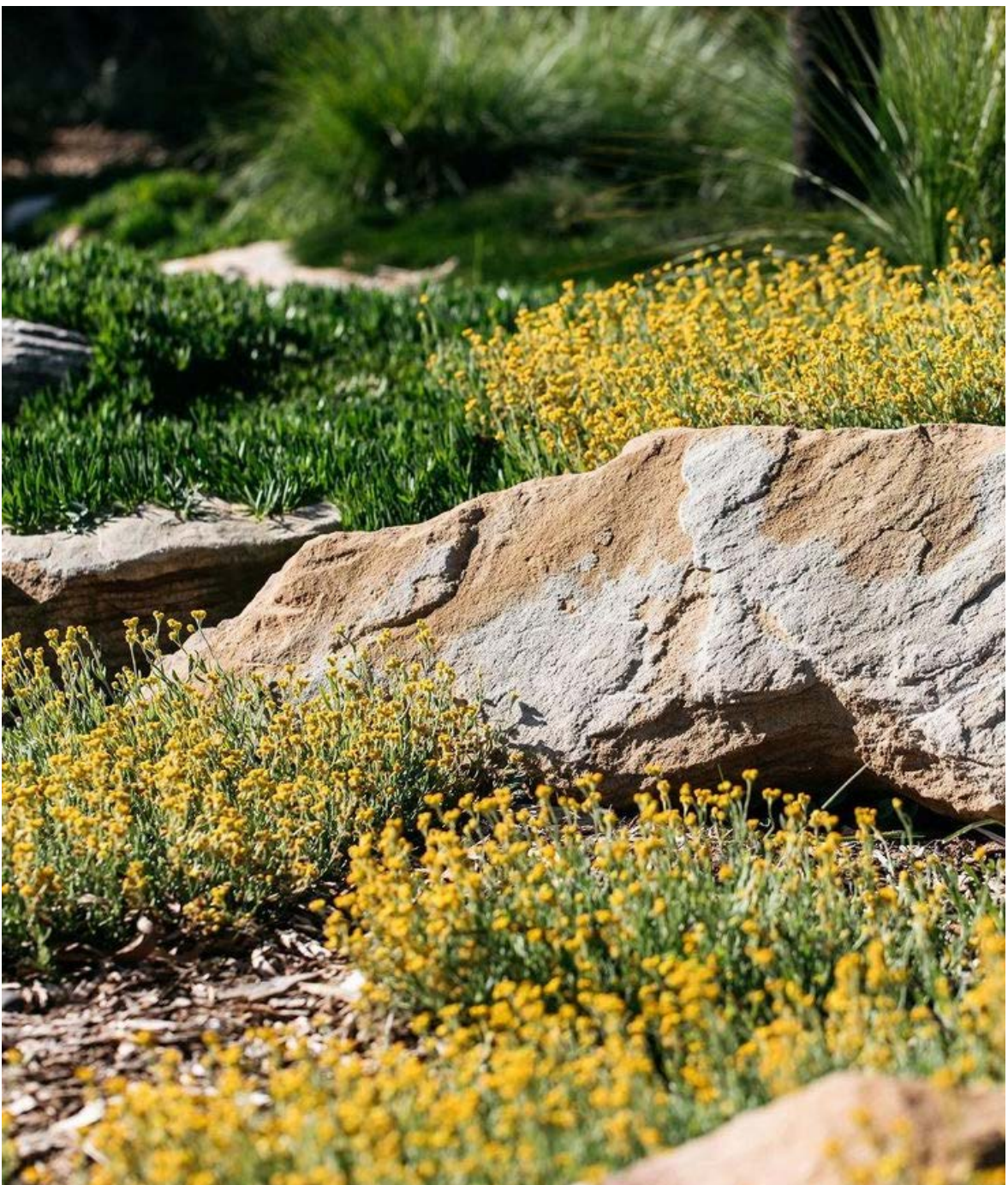
The contractor shall check and verify all work on site (including work by others) before commencing the landscape installation. Any discrepancies are to be reported to the Project Manager or Landscape Architect prior to commencing work. Do not scale this drawing. Any required dimensions not shown shall be referred to the Landscape Architect for confirmation.



# PROPOSED LANDSCAPE CHARACTER

The landscape scheme proposed for 2-4 Vimy Street, Bankstown focuses on creating inviting spaces for residents to enjoy and connect with others. It includes a variety of plants and materials to define areas for passive and communal use. The design pushes landscaped elements to provide comfortable spaces with softened and screened landscape.

Overall, the goal is to offer functional, attractive, and welcoming outdoor spaces that foster community and enhance the living experience.





# PROPOSED PLANTING PALETTE

---

## Planting Design and Plant Selection

The planting design for this development considers a range of factors to ensure functionality, sustainability, and aesthetic appeal, including:

- The location and purpose of planting beds.
- Native and indigenous species selection also in line with Council planting selections
- Irrigation and maintenance needs.
- Compliance with CPTED principles.
- Interest, diversity, and visual appeal in the design.
- Adaptation to site-specific growing conditions such as shade and wind exposure.

## Planting Scheme

A diverse selection of plants will define the landscape’s character and contribute to its visual and practical elements. Planting beds are strategically positioned to:

- Provide structure and highlight key locations.
- Define boundaries, pathways, and spaces.
- Enhance the overall amenity and visual interest.
- Incorporate water-sensitive urban design practices.
- Offer seasonal variation in appearance.
- Act as natural privacy screens between residences, adjacent developments, and streetscapes.
- Plant stock will include:
  - Advanced tree stock: Forming the majority of trees, with sizes starting from 75 litres.
  - Shrubs and under-storey species: Planted in mass areas at sizes from 150mm to 200 mm to ensure robust initial growth and longevity.

## Ground Floor Planting Scheme

The ground floor planting scheme enhances the site’s functionality and visual appeal. Resilient plant species are used in flood-prone areas for effective water management and biodiversity. Shade-tolerant plants address solar access challenges, ensuring growth in shaded beds. The design creates a welcoming streetscape with kerb appeal and greenery, providing comfort, privacy, and a vibrant atmosphere for residents and visitors.

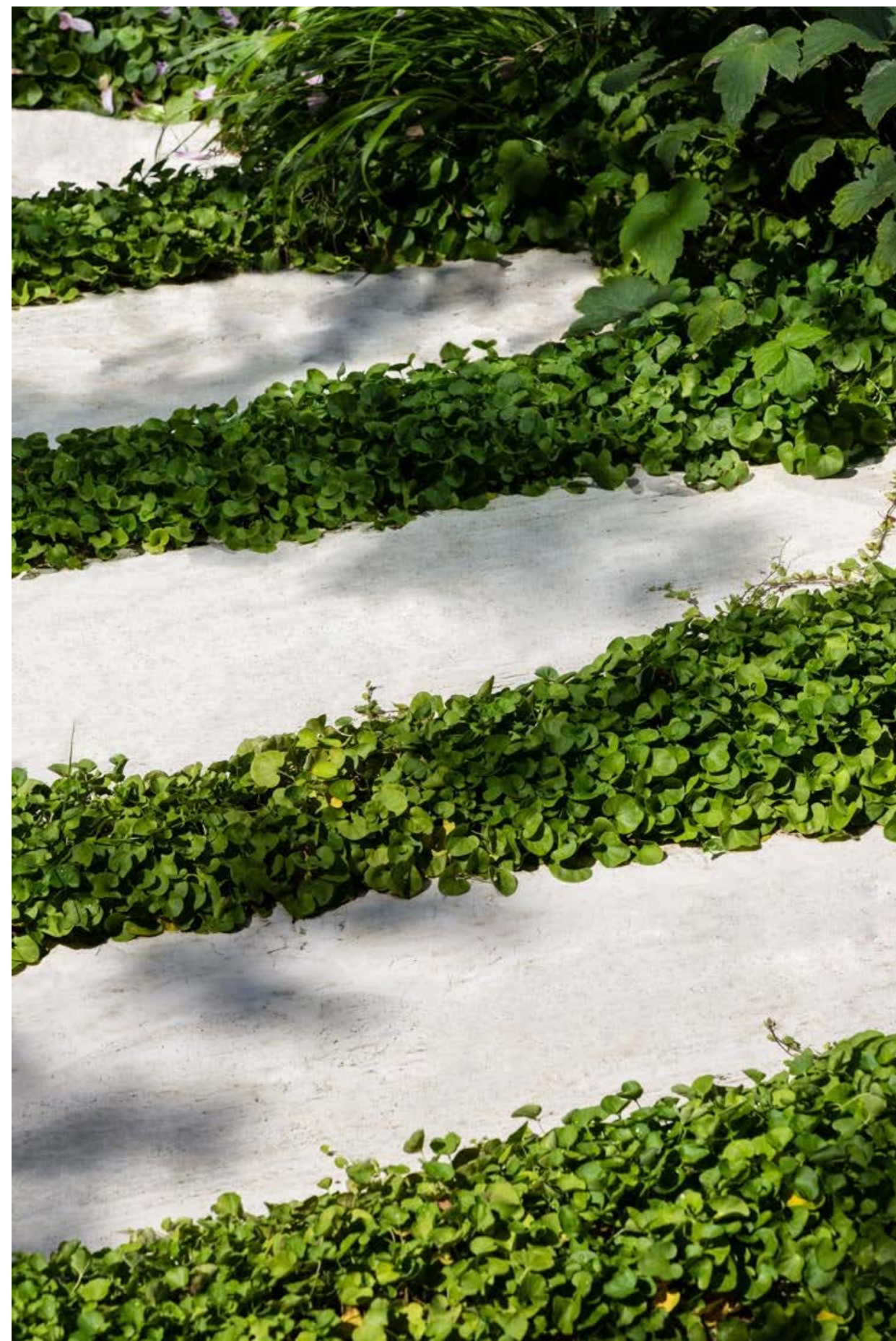
## Rooftop Communal Terrace and Level Planting

The rooftop communal terrace will feature durable and low-maintenance plantings to create a vibrant, green gathering space. The design will balance functionality and greenery, providing shaded seating, seasonal interest, and aesthetic appeal to encourage resident interaction and leisure.

On Level 4, carefully selected plantings will enhance privacy, aesthetics, and comfort. These areas will be designed to withstand varying conditions, such as reduced sunlight or increased wind exposure, while offering greenery and a sense of tranquillity to residents.

This integrated planting approach ensures a sustainable and cohesive design that benefits both residents and the environment, offering spaces that are visually appealing, functional, and resilient.







# MATERIALS, FURNISHINGS & FIXTURES PALETTE

## Materials, Furnishings & Fixtures selection

All materials, furnishings, and fixtures in the landscape design will comply with relevant Australian Standards and be selected for their high quality, durability, and aesthetic appeal. Key considerations include seamless integration with the built form, ease of maintenance, and the enhancement of the planting scheme as the dominant landscape feature:

- **Paving:** A mix of finishes, textures, and materials will create visual interest and provide different treatments for space specific areas such as entry paved areas, balcony areas, rooftop terraces and side access paths.
- **Seating:** High-quality seating elements with a combination of cohesive materials will enhance usability and complement the overall design.
- **Planters:** raised built planters will be integrated into the landscape, increasing planting opportunities and ensuring a premium, cohesive finish.
- **Robustness:** All materials will be selected with consideration for their durability and low maintenance requirements, ensuring their longevity in both communal and private spaces.

## Site Furniture

The rooftop communal terrace will feature a considered scheme with raised planter beds, balustrading to ensure safety while maintaining unobstructed views and a range of seating offerings. Furnishings will include a mix of communal tables, garden integrated benches, pergolas, and BBQ units. Additional seating, such as bar style settings and modular seating and tables, will provide varied options for residents and visitors, creating opportunities for flexible use and a mix of communal and passive settings.

The following imagery is indicative of the desired character of the precinct and is subject to further design development to confirm appropriateness and availability of materials to be used.



Concrete paving



Balcony / Patio paving



Rooftop terrace paving



Communal table settings



Integrated garden seating

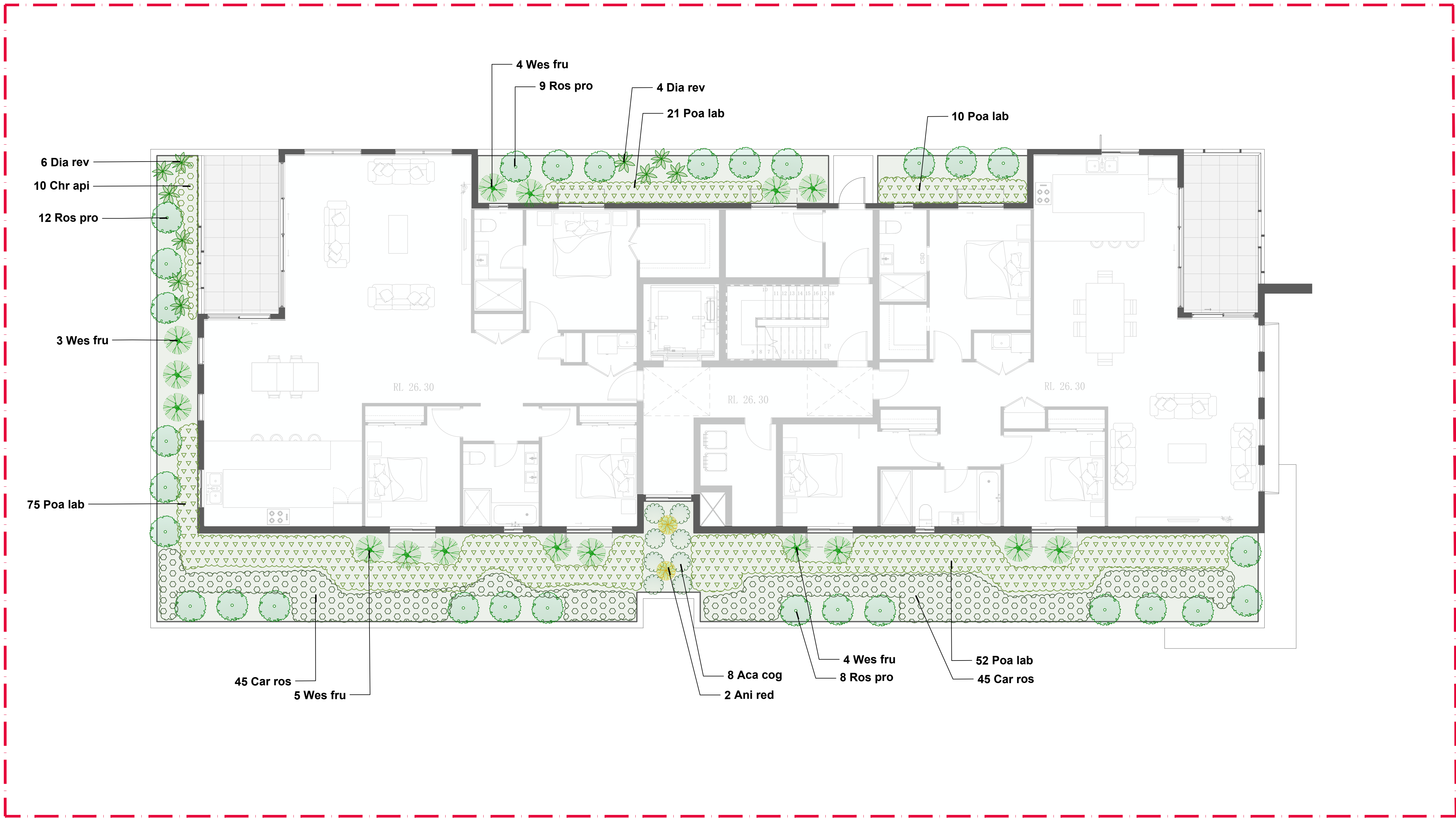


Modular seating





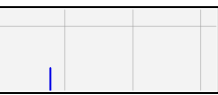




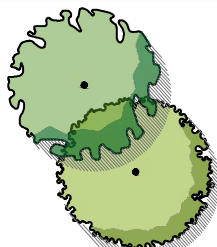
LEGEND



Site Boundary



Proposed outdoor paving  
Proposed non-slip rated outdoor paved  
balcony area.



Proposed tree planting  
Refer to details and Planting  
schedule



Proposed shrub and mass  
planting Refer to details and  
Planting schedule. Includes  
imported clean topsoil and  
100mm garden mulch within  
raised planter walls

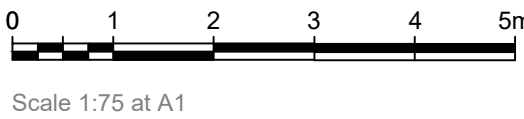


onescape  
LANDSCAPE ARCHITECTURE  
E: info@onescape.com.au  
M: 0401 681 264  
W: onescape.com.au

Issue:	Date:	Description:
A	23.04.2025	FOR DEVELOPMENT APPLICATION



DIAL 1100 BEFORE YOU DIG



**NOTE:** Do not scale off drawings. Check and verify levels and dimensions on site prior to commencement of works. Each drawing to be read in conjunction with the Landscape Specification Notes and Details, other consultancy drawings and specifications.



Designed/Drawn:  
**HN**

Date:  
**23.04.25**

Architect:  
**JS Architects**

Local Municipality:  
**City of Canterbury  
Bankstown**

Drawing Status:  
**FINAL**

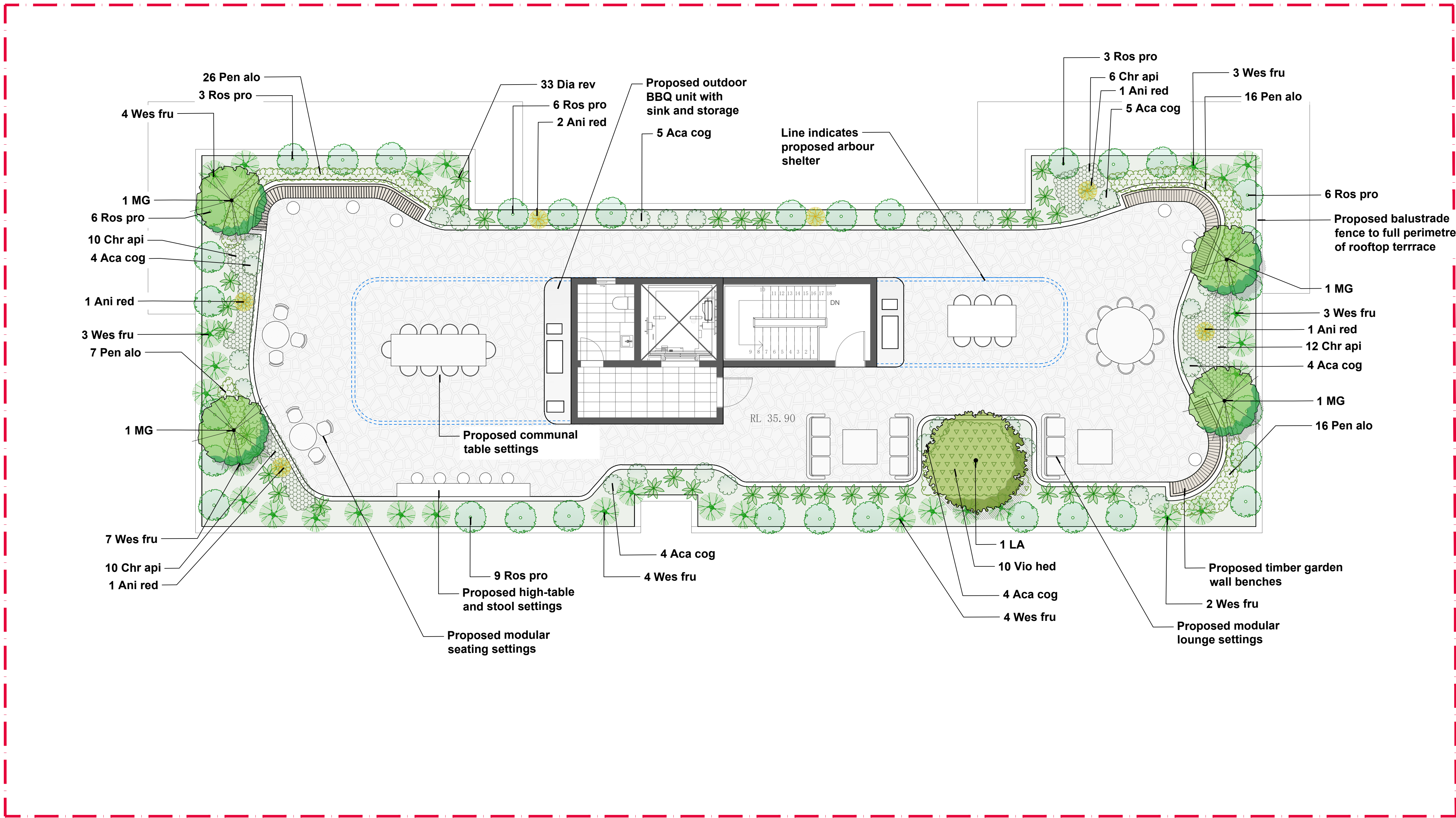
Project Site:  
**2-4 VIMY STREET, BANKSTOWN NSW 2200  
RESIDENTIAL FLAT BUILDING DEVELOPMENT**

Plan No:  
**LA-02**

Drawing Title:  
**LEVEL 4 - LANDSCAPE PLAN**

Revision:  
**A**





VIMY STREET

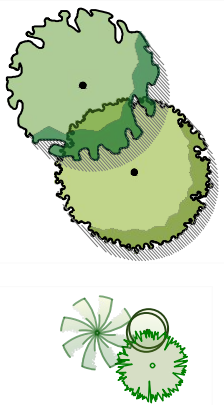
LEGEND



Site Boundary



Proposed outdoor paving  
Proposed non-slip rated outdoor paved rooftop area.



Proposed tree planting  
Refer to details and Planting schedule

Proposed shrub and mass planting  
Refer to details and Planting schedule. Includes imported clean topsoil and 100mm garden mulch within raised planter walls

Note: Irrigation system to be provided rooftop garden beds in compliance with Australian Standards AS 4419:2018 for low water use landscaping

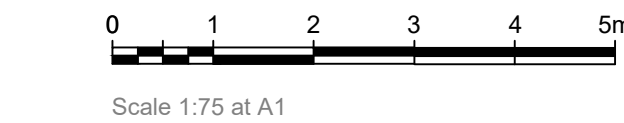


onescape  
LANDSCAPE ARCHITECTURE  
E: info@onescape.com.au  
M: 0401 681 264  
W: onescape.com.au

Issue:	Date:	Description:
A	23.04.2025	FOR DEVELOPMENT APPLICATION



DIAL 1100 BEFORE YOU DIG



**NOTE:** Do not scale off drawings. Check and verify levels and dimensions on site prior to commencement of works. Each drawing to be read in conjunction with the Landscape Specification Notes and Details, other consultancy drawings and specifications.



Designed/Drawn:  
**HN**

Date:  
**23.04.25**

Architect:  
**JS Architects**

Local Municipality:  
**City of Canterbury Bankstown**

Drawing Status:  
**FINAL**

Project Site:  
**2-4 VIMY STREET, BANKSTOWN NSW 2200**  
RESIDENTIAL FLAT BUILDING DEVELOPMENT

Drawing Title:  
**ROOFTOP TERRACE - LANDSCAPE PLAN**

Plan No:  
**LA-03**

Revision:  
**A**



# PLANTING SCHEDULE

CODE	BOTANICAL NAME	COMMON NAME	Typical mature height (metre)	Pot Sizes	Quantity		
STREET TREE							
CC	<i>Callistemon Citrinus</i>	Red Bottlebrush	4	75L	2		
TREES							
TL	<i>Tristaniopsis laurina</i>	Water Gum	8	75L	2		
ER	<i>Elaeocarpus reticulatus</i>	Blueberry Ash	15	75L	3		
LA	<i>Lagerstroemia archeriana</i>	Native Crepe Myrtle	4	75L	4		
MG	<i>Magnolia grandiflora</i> 'Little Gem'	Little Gem' Magnolia	10	75L	8		
SHRUBS, FEATURE PLANTS & GRASSES							
Syz aus	<i>Syzygium australe</i>	'Straight and Narrow'	Lilly Pilly	3	200mm	35	
Ban spi	<i>Banksia spinulosa</i>	Hair-pin Banksia	3	200mm	7		
Rha exc	<i>Rhapis excelsa</i>	Lady Palm	3	200mm	8		
Dod vis	<i>Dodonea viscosa</i>	Hop bush	3	200mm	32		
Lom lon	<i>Lomandra longifolia</i>	Mat rush	1.2	150mm	40		
Ban can	<i>Banksia spinulosa</i>	'Birthday Candles'	Birthday Candles'	0.5	200mm	2	
Dia rev	<i>Dianella revoluta</i>	Mauve Flax lily	0.8	150mm	40		
Poa lab	<i>Poa labillardierei</i>	Tussock grass	0.6	150mm	252		
Wes fru	<i>Westringia fruticosa</i>	Coastal Rosemary	1	200mm	60		
Phi xan	<i>Philodendron xanadu</i>	Xanadu	1	200mm	30		
Pen alo	<i>Pennisetum alopecuroides</i>	Fountain grass	1	150mm	65		
Ani red	<i>Anigozanthos</i>	'Big Red'	Kangaroo Paw	1	150mm	15	
GROUNDCOVERS							
Ros pro	<i>Rosmarinus</i>	'Prostrate'	Rosemary	Cascading Rosemary	0.8	200mm	69
Aca cog	<i>Casuarina glauca</i>	Cousin It	0.5	200mm	56		
Chr api	<i>Chrysocephalum apiculatum</i>	Yellow Buttons	0.3	150mm	103		
Vio hed	<i>Viola hederacea</i>	Native Violet	0.3	150mm	135		
Car ros	<i>Carpobrotus rossii</i>	Pigface	0.3	150mm	142		
TURF							
TF	<i>Buffalo</i>	Sapphire Buffalo	N/A	Rolls	N/A		

## PLANTING IMAGERY

TREES



Callistemon Citrinus



Tristaniopsis laurina



Elaeocarpus reticulatus



Lagerstroemia archeriana



Magnolia grandiflora 'Little Gem'

SHRUBS, FEATURE PLANTS & GRASSES



Syzygium australe



Banksia spinulosa



Rhapis excelsa



Dodonea viscosa



Lomandra longifolia



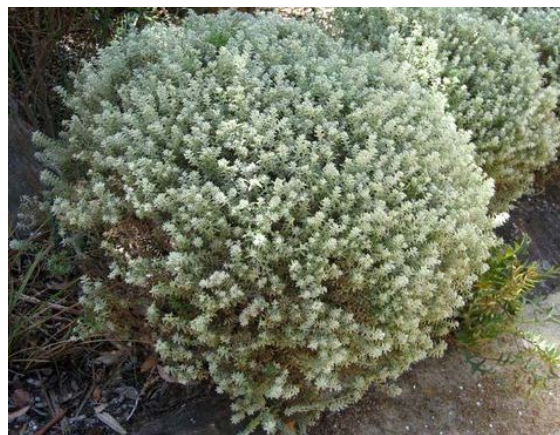
Banksia spinulosa 'Birthday Candles'



Dianella revoluta



Poa labillardierei



Westringia fruticosa



Philodendron xanadu



Pennisetum alopecuroides



Anigozanthos 'Big Red'

GROUND  
COVERS



Rosmarinus 'Prostrate' Rosemary



Casuarina glauca





Chrysocephalum apiculatum



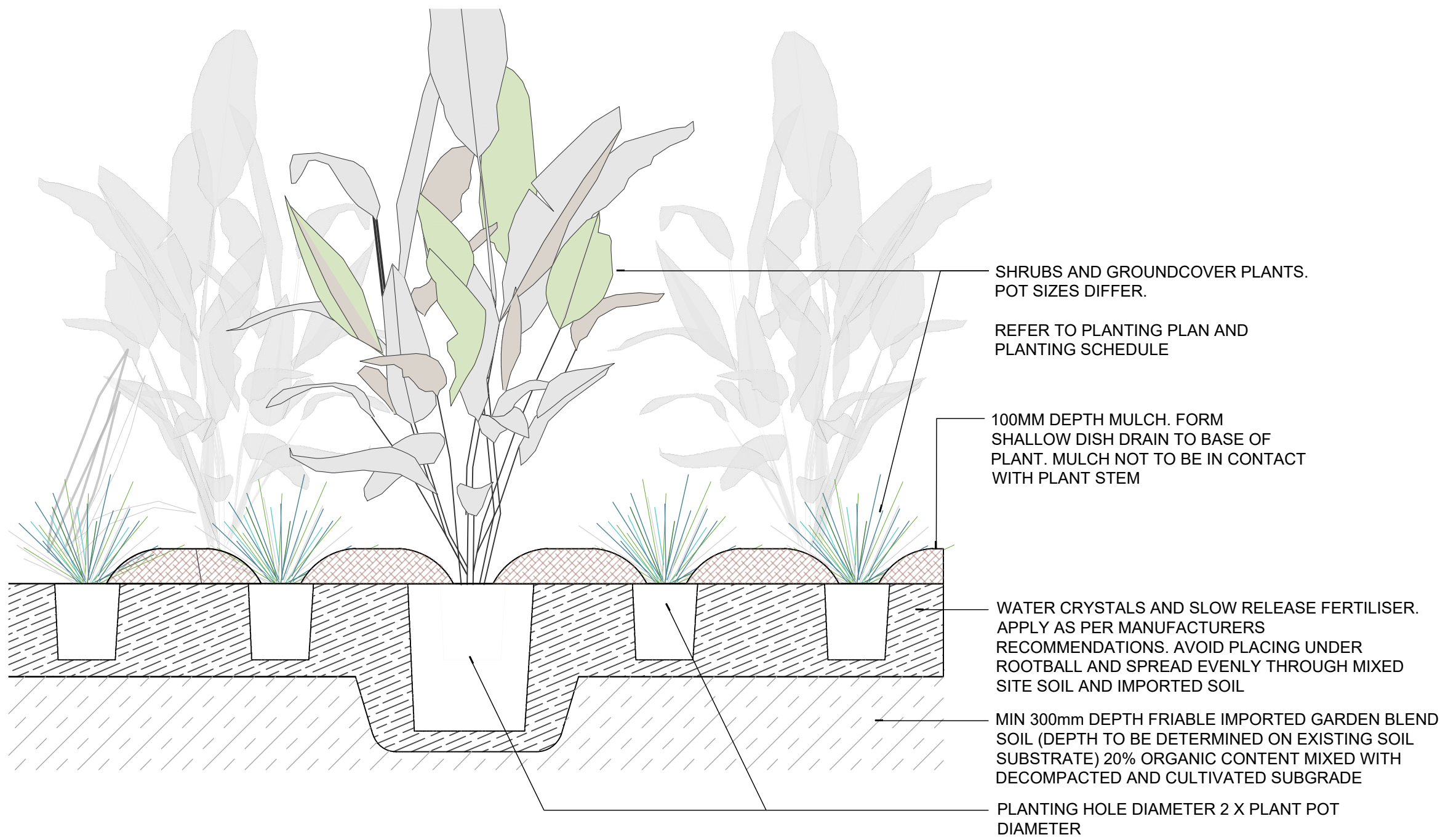
Viola hederacea



Carpobrotus rossii

 <div>onescape LANDSCAPE ARCHITECTURE E: info@onescape.com.au M: 0401 681 264 W: onescape.com.au</div>	Issue:	Date:	Description:	<div>Architect: JS Architects</div> <div>Local Municipality: City of Canterbury Bankstown</div> <div>Drawing Status: FINAL</div>	<div>Project Site: <b>2-4 VIMY STREET, BANKSTOWN NSW 2200</b> RESIDENTIAL FLAT BUILDING DEVELOPMENT</div>	<div>Plan No: LA-04</div>		
	A	23.04.2025	FOR DEVELOPMENT APPLICATION					
	DIAL 1100 BEFORE YOU DIG			<div><b>NOTE:</b> Do not scale off drawings. Check and verify levels and dimensions on site prior to commencement of works. Each drawing to be read in conjunction with the Landscape Specification Notes and Details, other consultancy drawings and specifications.</div>	<div>Designed/Drawn: HN</div>	<div>Date: 23.04.25</div>	<div>Drawing Title: PLANTING SCHEDULE</div>	<div>Revision: A</div>

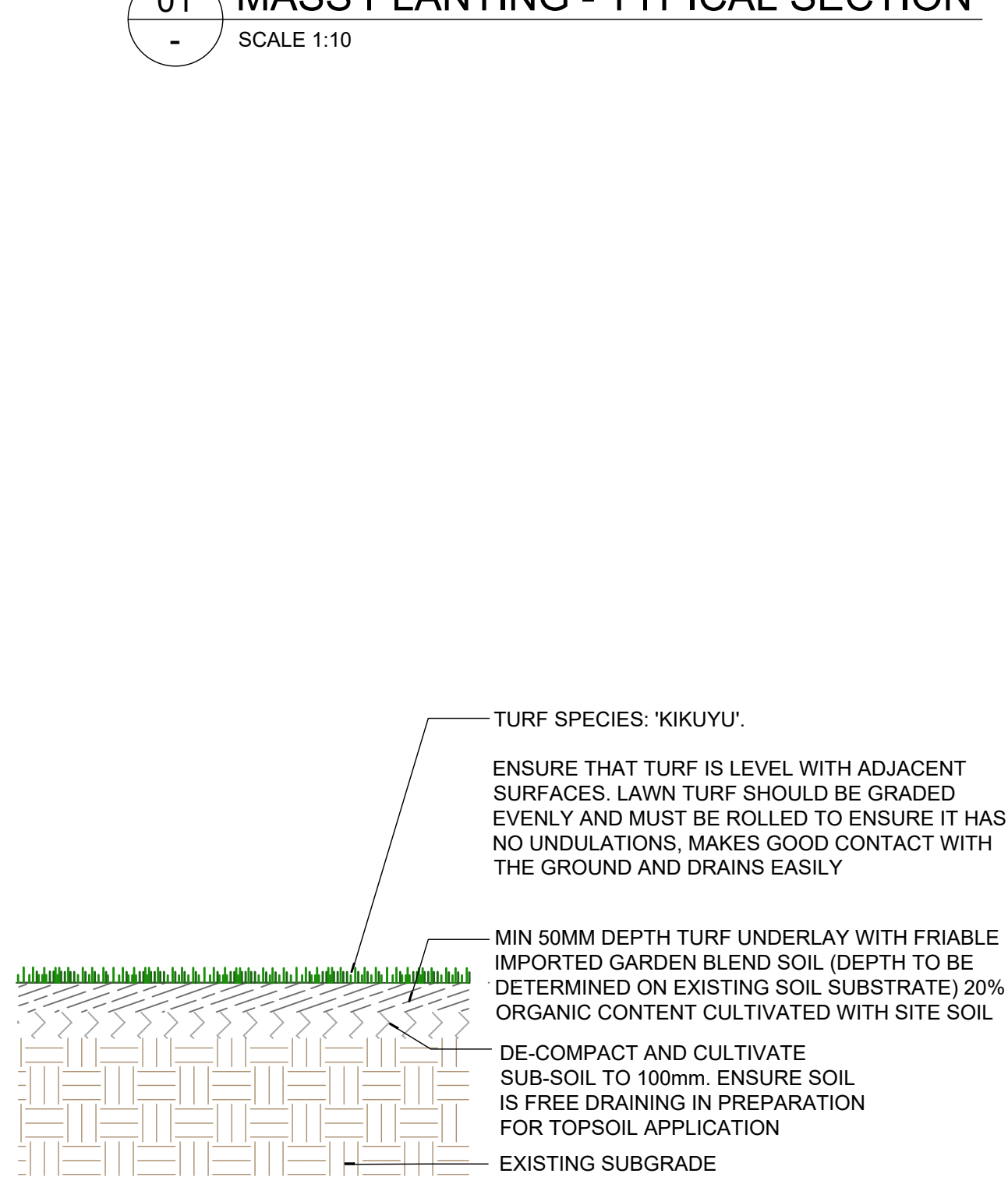




SECTION

01 MASS PLANTING - TYPICAL SECTION

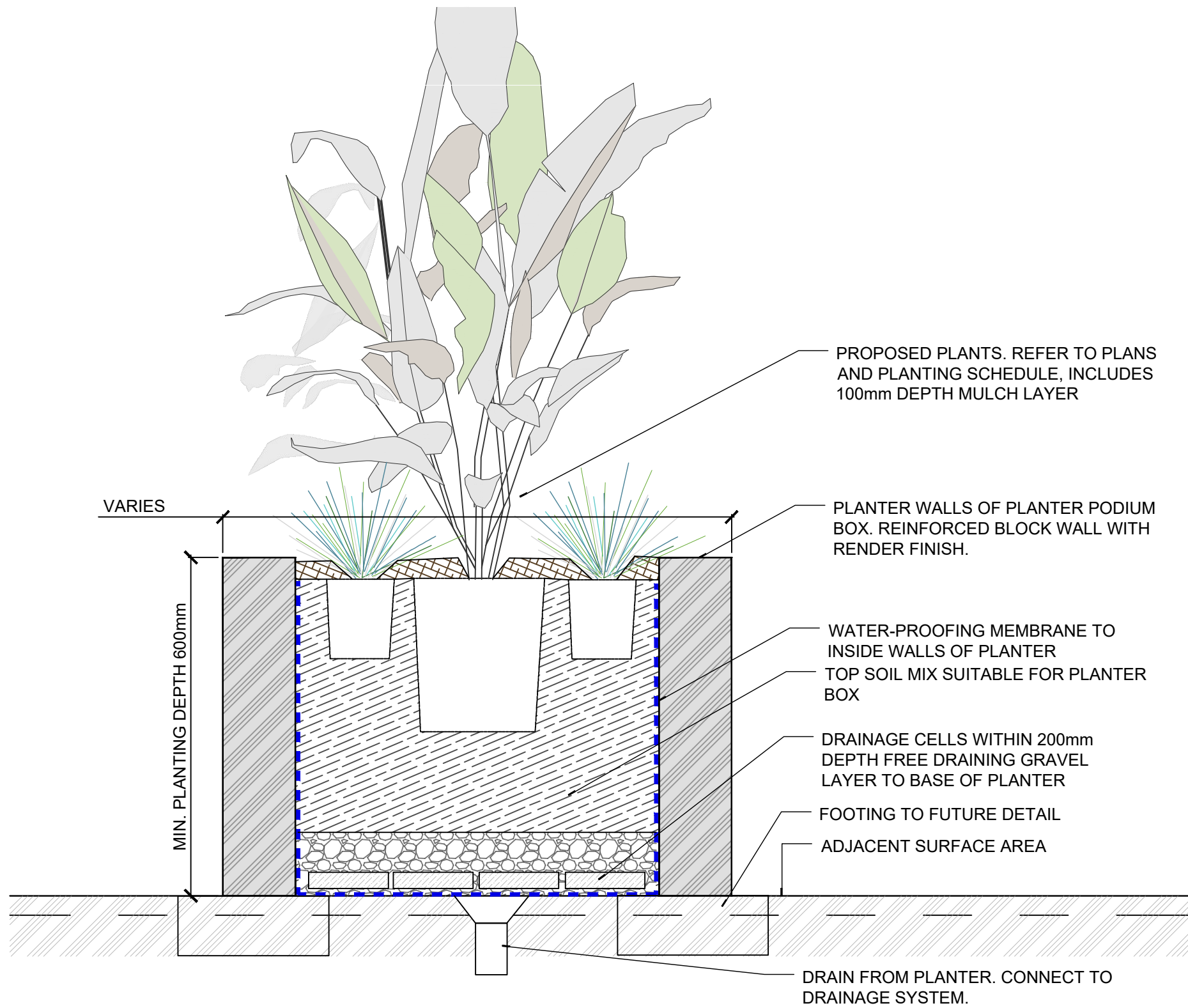
SCALE 1:10



SECTION

02 TURF - TYPICAL SECTION

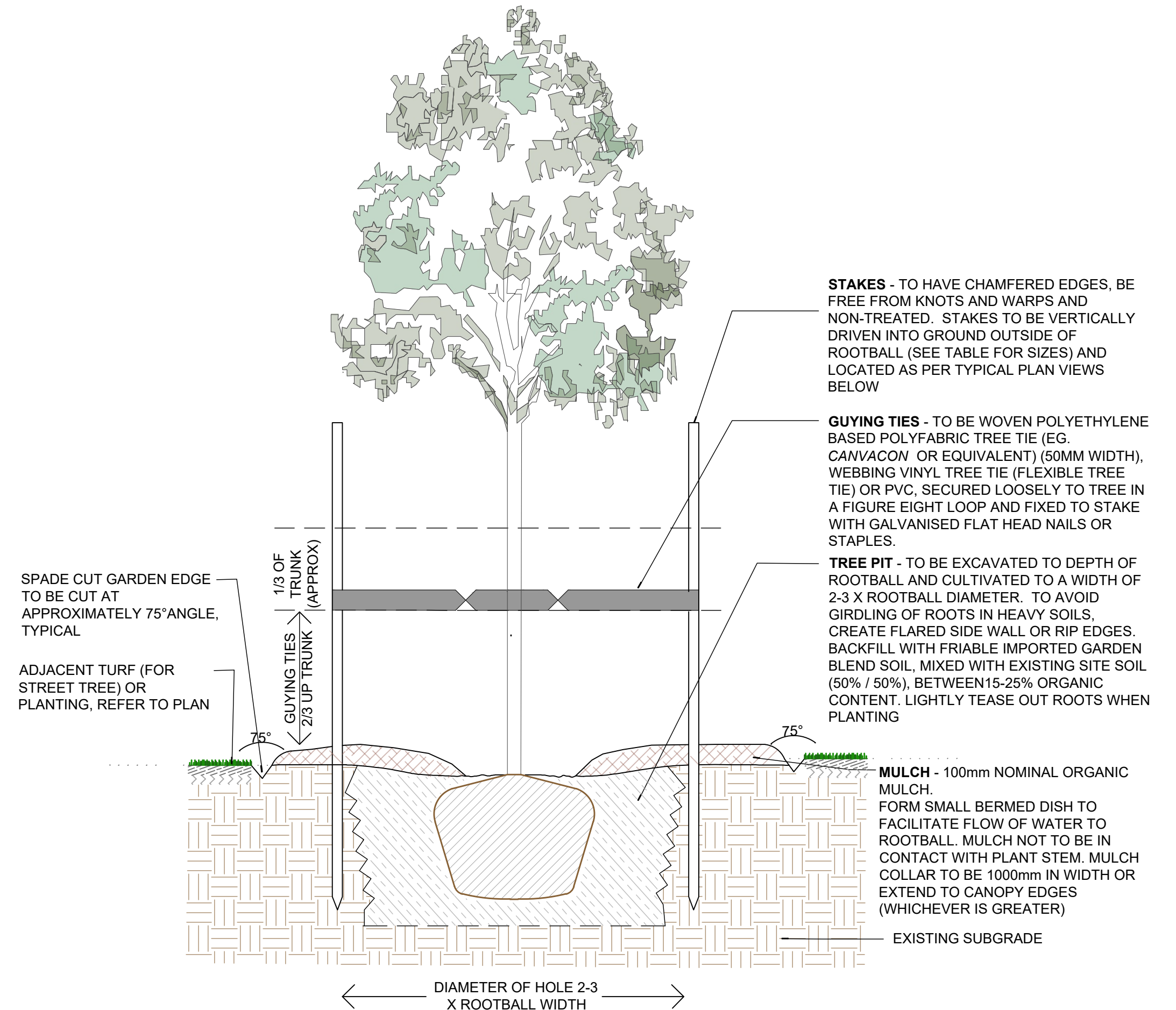
SCALE 1:10



SECTION

03 RAISED PLANTER BED - TYPICAL SECTION



SCALE 1:10



SECTION

04 TREE PLANTING - TYPICAL SECTION

SCALE 1:20

<div><div><div>onescape</div><div>LANDSCAPE ARCHITECTURE</div><div>E: info@onescape.com.au</div><div>M: 0401 681 264</div><div>W: onescape.com.au</div></div></div>	<div>Issue:</div> <div>Date:</div> <div>Description:</div>				<div>Architect:</div> <div>JS Architects</div>	<div>Local Municipality:</div> <div>City of Canterbury Bankstown</div>	<div>Drawing Status:</div> <div>FINAL</div>	<div>Project Site:</div> <div>2-4 VIMY STREET, BANKSTOWN NSW 2200</div> <div>RESIDENTIAL FLAT BUILDING DEVELOPMENT</div>	<div>Plan No:</div> <div>LA-05</div>		
	<div>A</div> <div>23.04.2025</div> <div>FOR DEVELOPMENT APPLICATION</div>							<div>Drawing Title:</div> <div>TYPICAL LANDSCAPE DETAILS</div>	<div>Revision:</div> <div>A</div>		
	<div></div> <div>DIAL 1100 BEFORE YOU DIG</div>	<div>NOTE: Do not scale off drawings. Check and verify levels and dimensions on site prior to commencement of works. Each drawing to be read in conjunction with the Landscape Specification Notes and Details, other consultancy drawings and specifications.</div>	<div>Designed/Drawn:</div> <div>HN</div>	<div>Date:</div> <div>23.04.25</div>							



LANDSCAPING NOTES

1.LANDSCAPE WORKS

LANDSCAPE WORKS ARE TO BE CARRIED OUT IN A MANNER CONSISTENT WITH ACCEPTED QUALITY HORTICULTURAL PRACTICES FOR THE REGION.

2.MASS PLANTED AREAS

PREPARATION

- BREAK UP SOIL TO A MINIMUM DEPTH OF 300MM.
- REMOVE ANY SPOIL AND DELETERIOUS MATERIAL OFF-SITE.
- REMOVE WEEDS, ROOTS, BOULDERS, RUBBISH AND OTHER DEBRIS.
- WHERE THE GARDEN BEDS ADJOIN HARD SURFACES, BRING THE PLANTING BED TO 100MM BELOW THE FINISHED DESIGN LEVELS OF ADJOINING HARD SURFACES TO ALLOW FOR MULCH PLACEMENT.

CULTIVATION

- CULTIVATION IS TO COMPLY WITH AS 4419 SOILS FOR LANDSCAPING AND GARDEN USE.
- CULTIVATE MANUALLY WITHIN 300MM OF PATHS OR STRUCTURES.
- REMOVE STONES EXCEEDING 25MM.
- REMOVE CLODS OF EARTH EXCEEDING 50MM.
- REMOVE WEEDS, RUBBISH OR DELETERIOUS MATERIAL BROUGHT TO THE SURFACE.

EARTH SHAPING

- GRADE TOPSOIL TO DRAIN FREELY AND EVENLY TO ADJOINING SURFACES (UNLESS SPECIFIED OTHERWISE).
- FINISHED SURFACES MUST BE SMOOTH AND FREE FROM LUMPS OF SOIL.
- AVOID COMPACTION OF SOIL PROFILE.

IMPORTED GARDEN BLEND SOIL (TOPSOIL)

- SOIL TO CONFORM TO AS 4419 SOILS FOR LANDSCAPING AND GARDEN USE. DEPTH - 400MM OR AS OTHERWISE SPECIFIED.

SLOW RELEASE FERTILISER

- SUPPLY AND INSTALL FERTILISER AS FOLLOWS;  
TREES (A) AGRIFORM 21G TABLETS (OR EQUIVALENT) (B) RATE & APPLICATION SUITABLE FOR THE TREE SIZE AND IN ACCORDANCE WITH MANUFACTURER RECOMMENDATIONS.  
ALL OTHER PLANTING; AGRIFORM 10G TABLETS (OR EQUIVALENT) (A) RATE & APPLICATION SUITABLE FOR THE PLANT SIZE AND IN ACCORDANCE WITH MANUFACTURER RECOMMENDATIONS (B) TABLET RATES; (I) 140MM POT = 1 TABLET, (II) 200MM POT = 2 TABLETS, (III) 300MM POT = 3 TABLETS, (IV) 45L BAG = 4 TABLETS

WATER CRYSTALS

- SPREAD EVENLY THROUGH SOIL AS PER MANUFACTURERS RECOMMENDATIONS.
- AVOID PLACING UNDER ROOTBALL.
- TYPE: TERRACOTTEM (OR EQUIVALENT) (A) RATE & APPLICATION SUITABLE FOR THE PLANT SIZE AND IN ACCORDANCE WITH MANUFACTURER RECOMMENDATIONS.

SOILS, SOIL AUGMENTATION & FERTILISING:

- CONTRACTOR TO PROVIDE SOURCE OF IMPORTED SOILS AND SAMPLE. TOPSOIL TO BE SOURCED FROM APPROVED SOURCE. SITE FILL FROM EX. DEVELOPMENT SITES WILL NOT BE ACCEPTED.
- CONTRACTOR TO OBTAIN 1 SOIL TEST PER GARDEN BED & TURF AREA FOR AUGMENTATION & FERTILISING OF EXISTING SITE SOIL BY: NUTRI-TECH SOLUTIONS PHONE: 07 5472 9900, FAX: 07 5472 9999
- IN GENERAL, SITE TOPSOIL IS TO BE AUGMENTED WITH NUTRI-STORE GOLD, BY NUTRI-TECH SOLUTIONS, YANDINA, QLD. RATE: 25KG BAG PER 50M2 FOR PLANTING AREA'S & 25KG BAG PER 100M2 FOR TURF AREAS. (TO BE CONFIRMED BY SOIL TEST AND NUTRI-TECH SOLUTIONS RECOMMENDATIONS).

MULCH

- MULCH TO COMPLY WITH AS 4454 COMPOSTS, SOIL CONDITIONERS AND MULCHES.
- MULCH TO BE SPREAD AS SOON AS POSSIBLE AFTER PLANTING TO PREVENT EROSION.
- SUPPLY AND SPREAD ORGANIC MULCH TO LOCATIONS SHOWN ON LANDSCAPE PLAN AND AS DETAILED.
- PLACE MULCH AT THE DEPTH SPECIFIED, CLEAR OF PLANT STEMS.
- RAKE MULCH TO AN EVEN SURFACE FLUSH WITH SURROUNDING FINISHED LEVELS.
- TYPE: AND DRAWINGS FOR MULCH TYPES.
- DEPTH: 100MM UNLESS SPECIFIED OTHERWISE.

PLANTS

SUPPLY

- SUPPLY AND INSTALL PLANTS AS DETAILED IN THE PLANT SCHEDULE AND PLANTING PLAN.
- NO PLANTS ARE TO BE SUBSTITUTED OR PLANTS SIZES AND/OR NUMBERS TO BE ALTERED WITHOUT PRIOR APPROVAL OF THE LANDSCAPE ARCHITECT.
- ALL TREES SUPPLIED ARE TO BE NATSPEC COMPLIANT
- SUPERINTENDENTS APPROVAL OF PLANT STOCK MUST BE GAINED PRIOR TO DELIVERY AS PER SCRC SPECIFICATION. ALL TREES TO BE COMPLIANT WITH AS 2303:2018 TREE STOCK FOR LANDSCAPE USE.
- PLANTS TO BE HEALTHY AND VIGOROUS, FREE FROM PEST AND DISEASES. REFER TO THE 'NATSPEC' SPECIFICATION FOR TREES (ALL SIZES) AND INDUSTRY 'GRADES AND STANDARDS FOR NURSERY PLANTS'.
- ROOT SYSTEMS TO BE HEALTHY WITH NO EVIDENCE OF ROOT CURL, RESTRICTION OR DAMAGE. ROOT BOUND PLANTS WILL NOT BE ACCEPTED.
- PLANTS SHOULD POSSESS A GOOD FORM CONSISTENT WITH THE SPECIES OR VARIETY, WITH AN APPROPRIATE CALIPER FOR THE BAG SIZE.
- PLANTS TO BE 'HARDENED OFF' FOR THE PREVAILING SITE CONDITIONS.TREES TO HAVE A WELL ESTABLISHED SINGLE LEADER UNLESS OTHERWISE SPECIFIED.

LABELING

- LABEL AT LEAST ONE OF EACH SPECIES OR VARIETY IN A PLANTING BATCH WITH A DURABLE TAG.

INSPECTIONS AND TESTS

- THE CONTRACTOR SHALL GIVE THE SUPERINTENDENT TWO WORKING DAYS NOTICE FOR THE ARRIVAL TO SITE OF THE TREE STOCK, SO THAT INSPECTION MAY BE MADE UPON TREE ARRIVAL, REGARDING TREE APPROVAL AND TREE LOCATIONS/ORIENTATION PRIOR TO INSTALLATION.

DELIVERY & STORAGE

- DELIVER REQUIRED NUMBER OF PLANTS TO THE SITE DAILY AND PLANT AS SOON AS PRACTICAL AFTER DELIVERY AND HARDENING OFF (UNLESS THERE IS SUITABLE SITE LOCATION TO STORE THE ALL THE PLANTS).

TREES

- UNLESS OTHERWISE NOTED, ALL TREES SHOULD BE SUPPLIED WITH A MIN CLEAR TRUNK OF 1.2M.
- FOR ADVANCED/EX-GROUND TREE STOCK INSTALLATION MEASURES.

INSTALLATION

- DIG HOLE FOR PLANTING SLIGHTLY LARGER THAN THE ROOT BALL (3 X).
- IN HEAVY CLAY, ROUGHEN THE SIDES OF THE HOLE.
- INSTALL WATER CRYSTALS - REFER SPECIFICATION AND APPLIED PER MANUFACTURERS RECOMMENDATIONS. AVOID PLACING UNDER ROOTBALL AND SPREAD EVENLY THROUGH TOPSOIL.
- SOAK ROOT BALL THOROUGHLY BEFORE REMOVING THE PLANT FROM THE CONTAINER.
- REMOVE CAREFULLY AND INSPECT ROOT BALL. REMOVE MATTED AND COILED ROOTS WITH SECATEURS GENTLY TEASE OUT ROOTS.
- PLACE PLANT IN THE HOLE AND BACK FILL WITH TOPSOIL.
- DO NOT MIX TOPSOIL WITH MULCH.
- WATER PLANT INTO GROUND.

STAKING

- DO NOT PIERCE ROOT BALL.
- STAKES TO BE CENTRALLY POINTED, DRIVEN VERTICALLY INTO GROUND OUTSIDE OF ROOTBALL AND TO BE LOCATED PER PLAN VIEW IN DWGS.
- USE HARDWOOD TIMBER STAKES.
- TIE WITH HESSIAN IN A FIGURE EIGHT PATTERN.

TURF

NEW TURF AREAS

- SUPPLY AND SPREAD SOIL MEDIUM TO MIN 100MM.
- FILL DEPRESSIONS AND PROVIDE EVEN GRADE / FALLS AS DETAILED ON LANDSCAPE PLANS.

UNDERLAY

- IMPORTED GARDEN BLEND AND SOIL TO CONFORM TO MINIMUM ACCEPTABLE STANDARDS OF SOILS AS DEFINED IN AS4419 SOILS FOR LANDSCAPING AND GARDEN USE.

SOIL AMELIORANT (AS REQUIRED)

- AS PER NUTRI-TECH SOLUTIONS, YANDINA, RECOMMENDATIONS. REFER SOIL AUGMENTATION & FERTILISING.

NEW TURF

- 'A' GRADE LAWN TURF AS SPECIFIED IN THE SCHEDULE OF FINISHES SUPPLIED BY AN ACCREDITED TURF PRODUCER SPECIES AS PER SCHEDULE.
- TURF TO BE LAID ALONG CONTOURS WITH STAGGERED, CLOSE BUTTED JOINTS SO THAT FINISHED TURF SURFACE IS LEVEL WITH ADJACENT SURFACE LEVELS. LAWN TURF SHOULD BE GRADED EVENLY AND MUST BE ROLLED TO ENSURE IT HAS NO UNDULATIONS, MAKES GOOD CONTACT WITH THE GROUND AND DRAINS EASILY.
- LIGHTLY ROLL AND WATER TO ENSURE AN EVEN GRADE WITH NO BUMPS OR DEPRESSIONS.

TOP DRESSING



- TOP DRESS WHEN TURFED AREAS BECOME ESTABLISHED - ALL AS PER SCRC STREETSCAPE & LANDSCAPE MAINTENANCE MANUAL.
- IMMEDIATELY AFTER THE FIRST CUT, TOP DRESS WITH A 5MM LAYER OF COURSE PIT SAND.

ESTABLISHMENT

- ALL TURF TO BE MAINTAINED FROM FIRST INSTALLATION UNTIL SATISFACTORY ESTABLISHMENT IS ACHIEVED.
- DO NOT LAY TURF IN EXTREME HOT OR COLD WEATHER.
- TURF IS TO DISPLAY OPTIMAL HEALTH AND VIGOUR.
- TURF TO BE SUPPLIED WITH ADEQUATE NUTRIENTS AND WATER.
- TURF TO BE KEPT FREE OF PESTS AND DISEASES.

GENERAL MAINTENANCE SCHEDULE

OPEN SPACE ELE- MENT AND/OR TASK	ACTIONS	FREQUENCY	NUMBER OF TIMES PER YEAR
Hard Landscape	Inspection	Monthly	12
	Repair	As required	As required
Gravels	Inspection	Monthly	12
	Repair	As required	As required
Furniture	Inspection	Monthly	12
	High pressure hosing	Annually	1
	Oiling of timber	Every 6 months	2
	Repair	As required	As required
Planters + trellis	Visual inspection of all drain- age points for obstructions	Quarterly	4
	Inspection of soil media for integrity and plant growth	Quarterly	4
	Repair	As required	As required
Irrigated turf areas	Mowing	Fortnightly (Sept-April) Monthly (May-Aug)	22
	Fertilisers	Annually (Sept and April)	1
	Top dressing	As required	As required
Weed removal	By hand	Monthly	12
	Chemical treatment	Annually	1
Garden beds	Inspection for plant health, growth and signs of pests and disease	Monthly	12
	Fertiliser	Biannually (Feb and Sept)	2
	Mulch replenishment	Annual	1
	Pruning and trimming	Every 6 months	2
	Weeding	Monthly	12
	Plant replacement	As required	As required
Trees	Inspection	Annually	1
	Pruning	As required	123
	Fertiliser	Biannually (February and September)	2
	Mulch replenishment	Annually	1
	Tree replacement	As required	As required
Irrigation	Inspection	1 times per week (Sept - April) Weekly (May to August)	30
	Flushing	Monthly (May- August)	4
	Repair	As required	As required
Rubbish removal		As required	Every visit
Graffiti removal		As required	Every visit

<div><div>onescape LANDSCAPE ARCHITECTURE E: info@onescape.com.au M: 0401 681 264 W: onescape.com.au</div></div>	Issue:		Date:	Description:		Architect:  JS Architects		Local Municipality:  City of Canterbury Bankstown		Drawing Status:  FINAL	Project Site:  2-4 VIMY STREET, BANKSTOWN NSW 2200 RESIDENTIAL FLAT BUILDING DEVELOPMENT	Plan No:  LA-06
	A		23.04.2025	FOR DEVELOPMENT APPLICATION								
				DIAL 1100 BEFORE YOU DIG		NOTE: Do not scale off drawings. Check and verify levels and dimensions on site prior to commencement of works. Each drawing to be read in conjunction with the Landscape Specification Notes and Details, other consultancy drawings and specifications.		Designed/Drawn:  HN	Date:  23.04.25	Drawing Title:  LANDSCAPE SPECIFICATION & MAINTENANCE NOTES	Revision:  A	